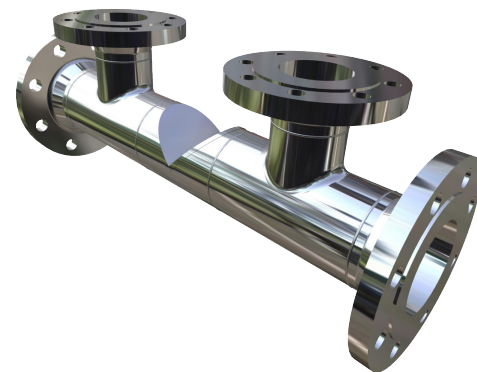


Description

Sur-Flo's Differential Wedge Meter is built to handle a wide range of flows—including abrasive and challenging media—making it ideal for upstream, midstream, and downstream applications. This robust differential pressure technology delivers accurate and consistent flow measurement, thanks to its durable construction and straightforward design. The wedge meter's simple operating principle maintains a true square root relationship between flow rate and differential pressure, ensuring reliable performance across virtually any process condition.



Features

- Lowers pumping costs and offers true bi-directional flow measurement
- Delivers mass flow output when paired with a multivariable transmitter ($\pm 0.5\%$ accuracy, calibrated)
- Excellent repeatability ($\pm 0.2\%$ of readings) with a wide turndown ratio (10:1)
- Accurately measures high viscosity fluids—up to 3000 cP and beyond
- Handles abrasive and erosive slurries, viscous or dirty fluids, clean liquids, steam, and gases
- Engineered and manufactured to ISO 5167-6 standards

What Sets It Apart

The wedge meter operates on a similar principle to a segmental orifice but offers key advantages. Unlike a segmental orifice, which leaves a partial restriction in the line, the wedge design allows solids and particulates to pass freely through the meter—reducing the risk of clogging. This design also enables accurate measurement at very low Reynolds numbers, down to 500, making it suitable for laminar flow. Additionally, wedge meters typically provide a higher turndown ratio compared to segmental orifice plates.

Ordering Information



Size	2" to 24" (DN50 to DN600)
Accuracy	$\pm 3.0\%$ uncalibrated; up to 0.5% calibrated
Certifications	Designed to ISO-5167-6
	Manufactured to ASME, ANSI B31.1, NACE MR0175, CSA-Z299.3
Application	Water, oil, steam, air/gas, other liquids
Temperature Rating	Up to 800° F (426 °C) (Dependant upon material selection)
ANSI	150# up to 2500#
Material	Body & Wedge: 316/316L (Other materials available)
	Instrument Connection: Carbon Steel or Stainless Steel
Optional Hardcoating	Tungsten Carbide (WC) or Chromium Carbide (CrC)