

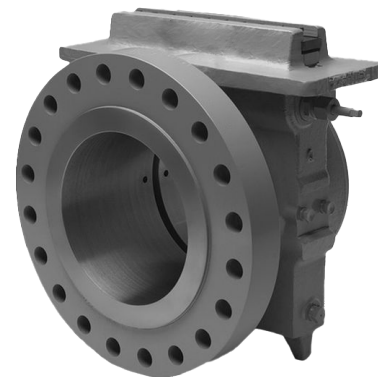
Single Chamber Orifice Meters – J Flow Style



Precisionflow

Description

Single Chamber Orifice Meters are available in a range of standard line sizes and configurations with optional materials available upon request. Single Chamber Orifice Meters are used for flow measurement applications and are used to aid orifice plate inspections without the need to break the flange pipeline integrity, albeit a line shutdown and depressurisation is required. The plate is housed in a carrier ring with seals to mitigate any process bypass of the plate causing mis-measurement. Economical and easy-to-use, this low maintenance flow measurement device simplifies the plate inspection and removal process without the need for flange separation.



Features

- J-Flow Single Chamber Orifice Meters for flow measurement are quoted complete with orifice plates (datasheet PF-500OP). (Full code compliant meter runs/spools and flow conditioners/19 tube bundles will typically be purchased to complete the assembly – refer to relevant datasheet).
- Facing Type: Flat Face 'FF', Raised Face 'RF', Ring Type Joint,
- Materials: High Temp and Low Temp Carbon Steel, Stainless Steel 316, Duplex, Super Duplex, Monel, Inconel
- Sizes: 8"-24" – other sizes available upon request
- ANSI CLASS: 150-2500 ANSI
- Manufactured in accordance with international measurement codes ISO 5167 & AGA 3
- Options: Painted or special coatings, please state with inquiry

Ordering Information



Size	8"-24" (other sizes available upon request)
SCH	Pipe schedule or custom ID
ANSI	150 – 2500 & up to 10,000 PSI
Code	ISO 5167 & AGA 3
Configuration	Weld x Weld, Flange x Flange, Flange x Weld
Flange Facings	Raised Face, Ring Type Joint, API Groove, Hubs & Customer specific
QTY of Tapping pairs	2 (one tapping pair per meter side) 4 (two tapping pairs per meter side also known as Telemetry taps – (note telemetry taps not available for ISO 5167 orders)
Tapping	NPT-F, Flanged Cow-horn (ANSI & facing to suit line flange), Customer Specifc
Material	Cabon Steel, Low Temp Carbon Steel, Stainless Steel, Duplex, Super Duplex Inconel, Monel